

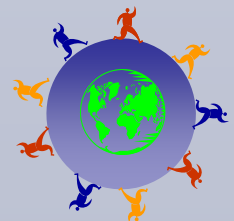
# **Fundamentals of Clinical Research Workshop**

**17 – 22 January, 2010  
Dar es Salaam, Tanzania**

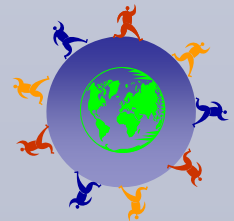
**Polly R. Sager, Ph.D.**

**Assistant Director for International Research  
In Infectious Diseases**

**Division of Microbiology and Infectious Diseases  
National Institute of Allergy and Infectious Diseases  
NIH, DHHS**



# Department of Health & Human Services



# National Institutes of Health

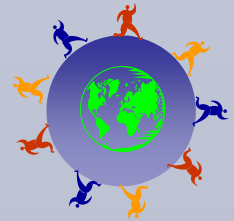
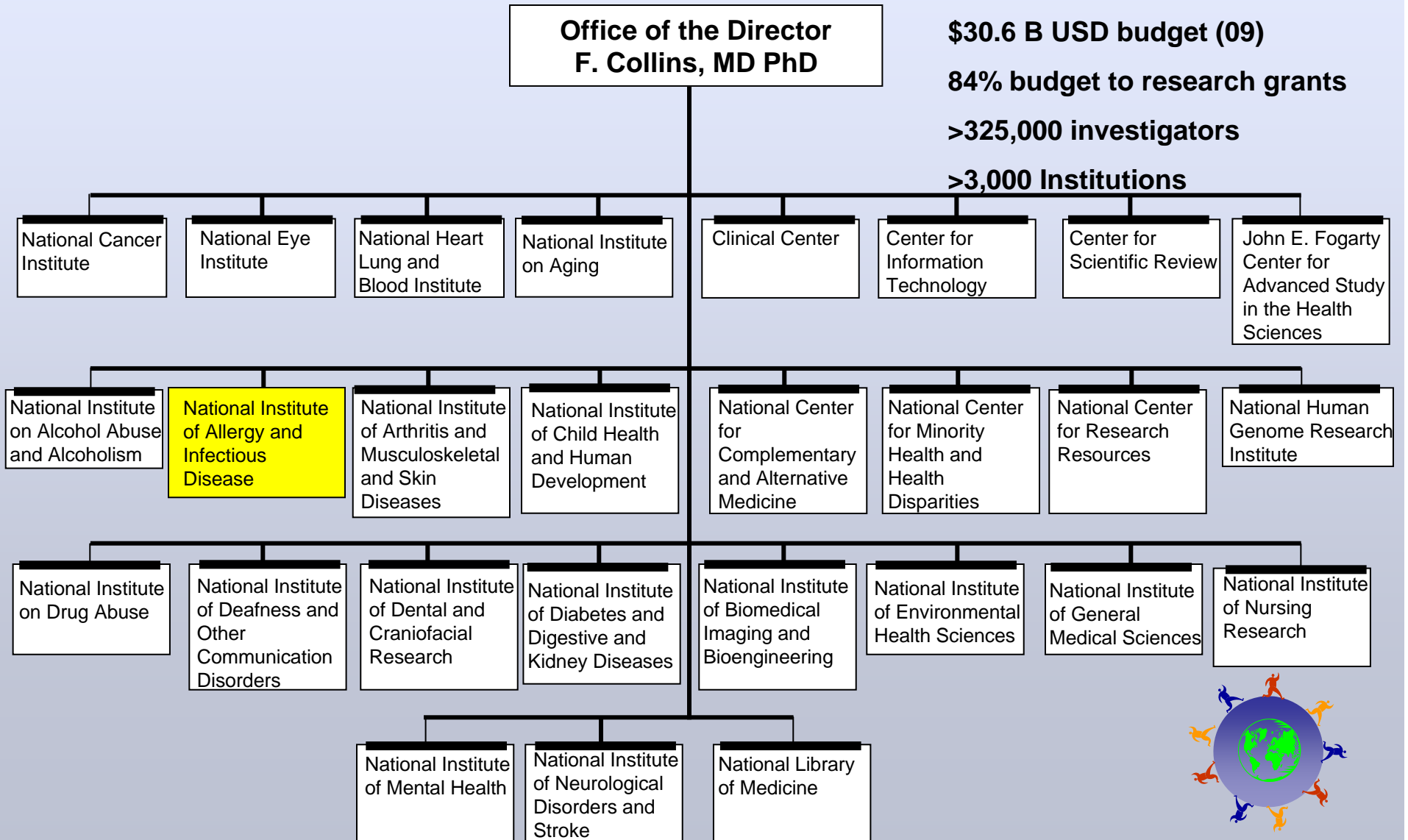
>19,000 employees

\$30.6 B USD budget (09)

84% budget to research grants

>325,000 investigators

>3,000 Institutions



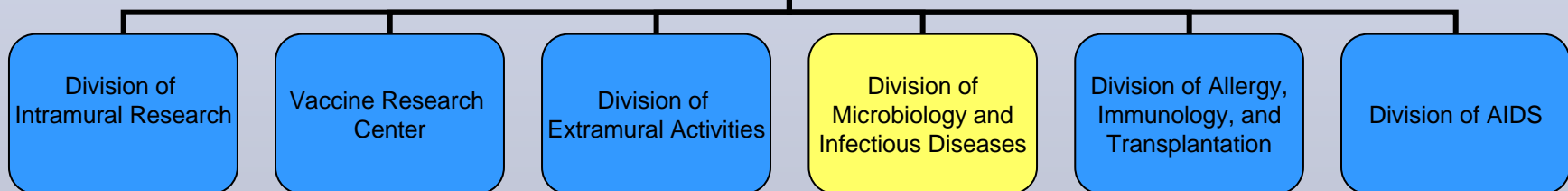
# National Institute of Allergy and Infectious Diseases



**NIAID**  
A. S. Fauci, M.D.  
Director

Office of  
Global Affairs

Admin Offices  
Office of Director

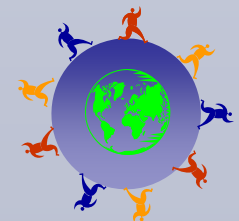


**1,600+ employees**

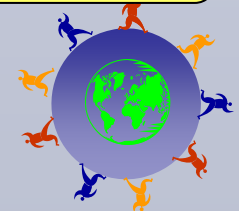
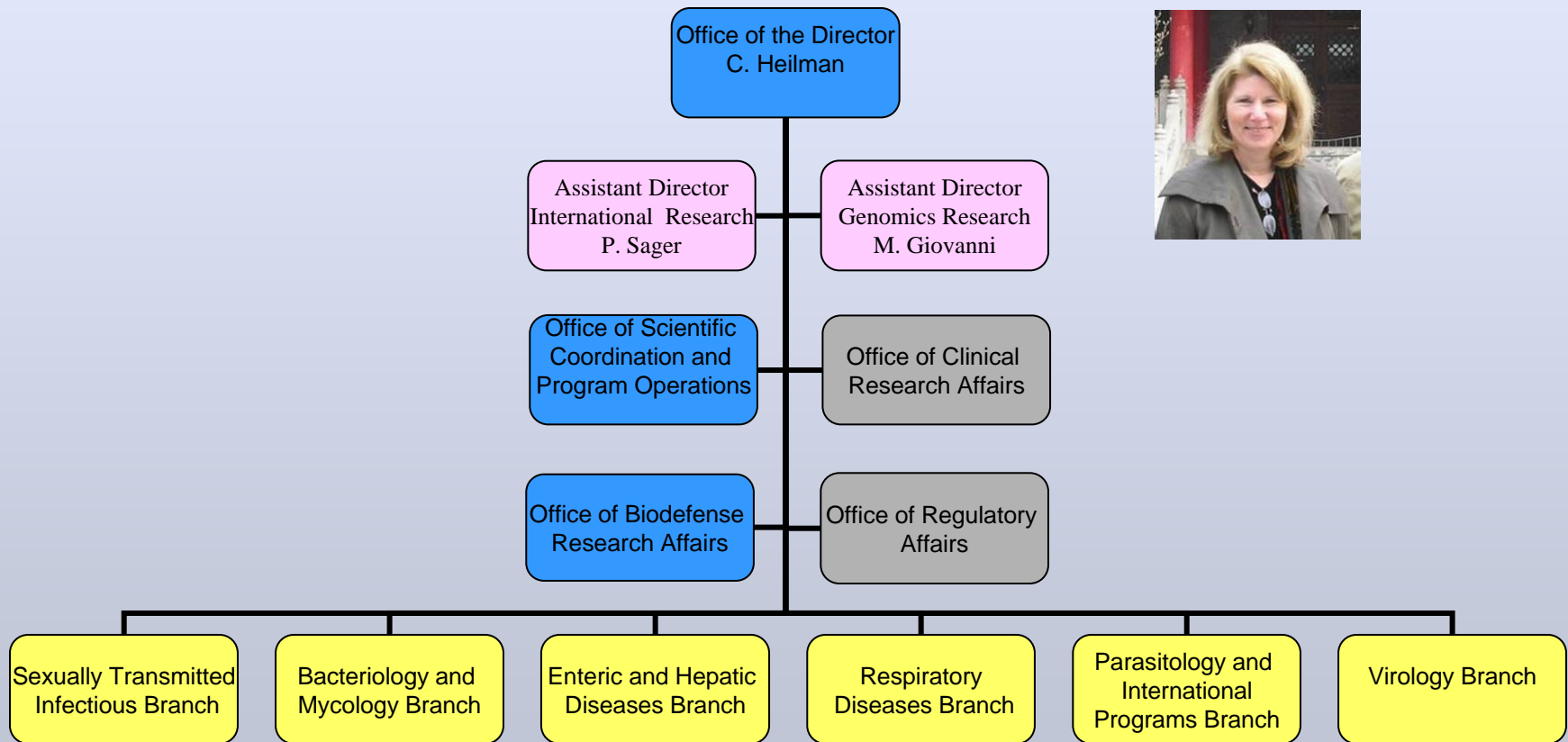
**\$4.6B USD 2008**

**~1/3**

**biodefense/emerging  
IDs; immunology and  
IDs; HIV/AIDS**



# Division of Microbiology and Infectious Diseases



# DMID RESEARCH

- **Approximately 300 infectious diseases and pathogens**
- **Organisms and vectors**
- **Genomics --> clinical trials for drugs, vaccines, and diagnostics**
- **Budget expanded by biodefense – emerging/re-emerging infectious diseases**

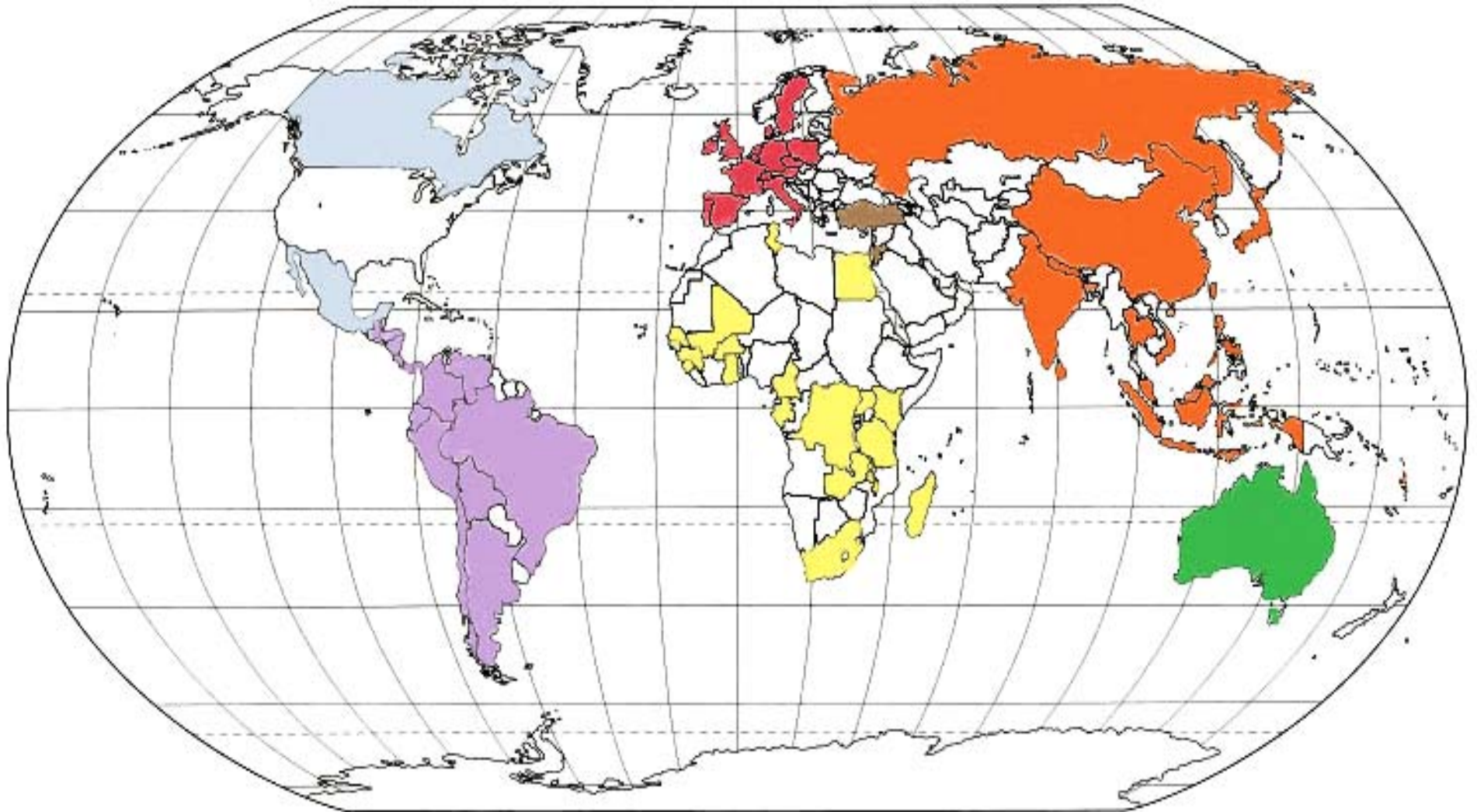


# DMID Research Priorities

- **Influenza – pandemic, avian and seasonal**
- **TB – especially MDR and XDR**
- **Malaria – including drug resistance**
- **Neglected diseases**
- **Biodefense-related organisms**

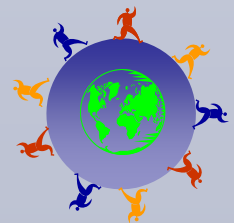


# DMID International Research



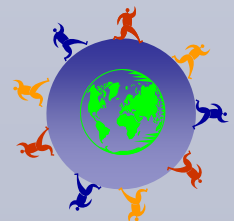
# Support for International Research

- **International Clinical Studies Support Center (ICSSC) – training opportunities**
- **DMID guidance – protocols, data management and safety plans**
- **DMID staff**
  - Program Officer
  - International Research



# DMID Support for International Research

- **International Clinical Support Service Center at FHI [www.icssc.org](http://www.icssc.org)**
  - **Site and laboratory assessments; monitoring of ongoing studies**
  - **Protocol Development support**
    - **Protocol writing; biostatistics; data management**
  - **Training**
    - **GCP and protocol specific**
    - **Laboratory safety**
- **Fundamentals of Clinical Research Workshops**
  - **Dar e Salam– Jan, 2010; Bangkok – Sept 2010**
- **Data Management – annually in June / NC**



# Your Work this Week

- **Listen - participate**
- **ASK QUESTIONS**
- **Share experiences**
- **Enjoy yourselves**
- **Take this experience home to your site**





MÖVENPICK

